


 **SHUTTERS<sup>®</sup>**  
F A C T O R Y  
european **shutters** specialists

 **MIMEO**  
COMPOSITE SHUTTERS

 **CLASSIC**  
DOUGLAS FIR SHUTTERS

 **SELECT**  
ASH WOOD SHUTTERS



## About our company

Over the past 10 years, we have established ourselves as a leading manufacturer of plantation shutters and have gained a wealth of experience providing first class products and services to customers across the UK, Italy, Spain, Belgium and The Netherlands.

Knowing the importance of a speedy service and without compromising the quality, strategic positioning in Europe allows us to commit to **lead times** of up to **5 weeks** on our Mimeo Composite Shutters, for the entire European Market.

We are continuously thriving to expand our client portfolio and commit to the highest standard of service and quality.

London  
United Kingdom

Standaardbuiten  
Netherlands

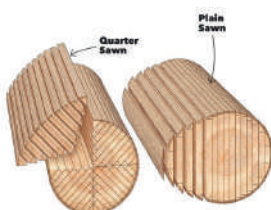
Onesti  
Romania



sustainability  
and  
crafting excellence



**CARB Compliant and our wooden shutters are FSC Certified.**



## quarter-sawn logs

We care for the environment and our customer's safety. Our products or paints do not contain VOCs (Volatile Organic Compounds), or any other harmful chemicals. We only use Lead-free formulations and Eco-Friendly materials. All our products are CARB Compliant and our wooden shutters are FSC Certified.

## component joining

We use mortise and tenon joints between the rail and the stile of our wooden shutters. Mortise and tenon joints are designed to withstand the shear stress and racking forces applied when operating shutters.



## added stability and durability

Every shutter is hand built by master craftsmen who have years of experience. uPVC co-polymers will withstand not only boisterous handling by children or pets, but accidental damage, damp, heat, fading and yellowing from ultra-violet light. Our Mimeo Composite shutters come with a metal core in the components, for added stability and durability of the shutter panels.





## **MIMEO - composite plantation shutters**

Mimeo Composite shutters are specifically designed for all rooms but are ideal for bathrooms and wetrooms as they withstand high humidity, moisture and are 100% waterproof.

This range offers the best value for money and can be supplied in **up to 5 weeks**. The Mimeo Composite Shutters are covered by **10 years warranty**.





## CLASSIC - douglas fir wood shutters



Further adding to the versatility of the product, it comes available in **12 colours**, ranging from **white to dark grey**.

Should that not be enough, we can also provide a **colour matching service** and **achieve whatever colour might be needed**.

The Classic Shutters range is covered by **5 years warranty**.

standard colours

standard colours

stained colours

## SELECT ASH WOOD SHUTTERS

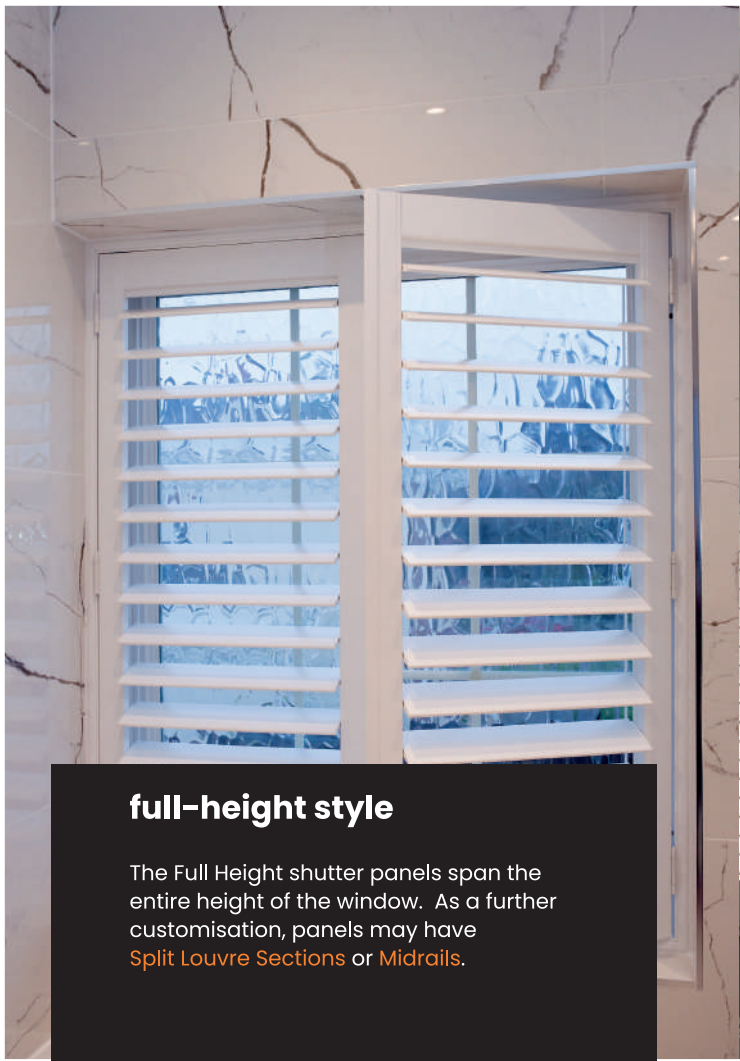
### SELECT - ash wood shutters



The Select Ash wood shutters offer a great combination of **strength** and **shock resistance**. One distinctive feature for this range is the **natural wood grain surface** of the finished product.

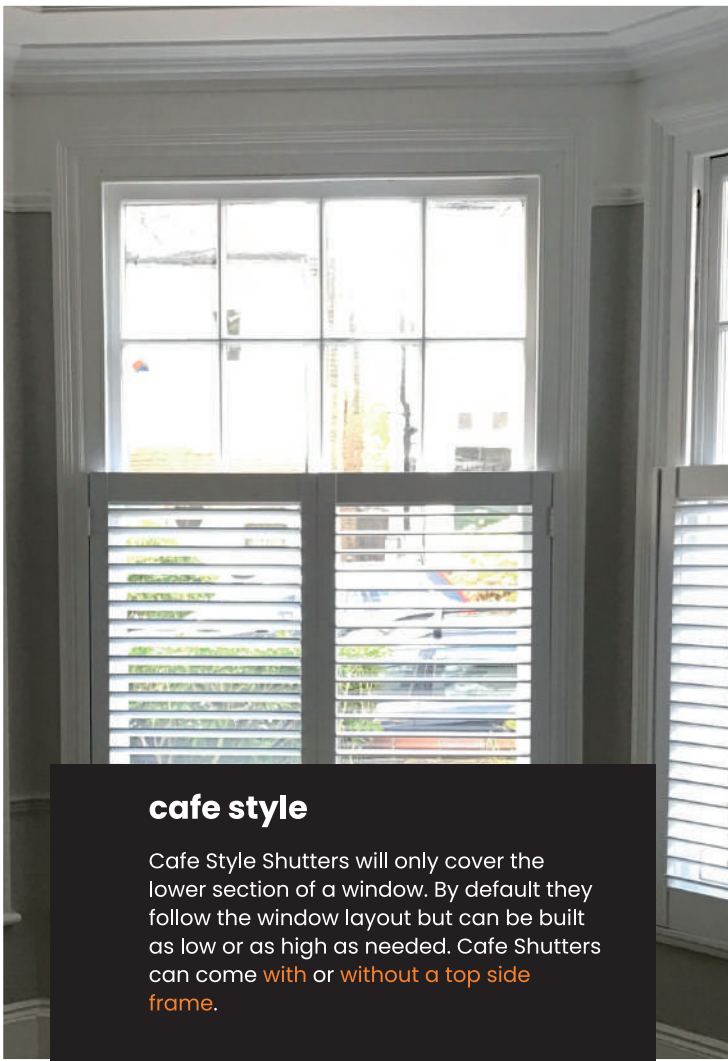
Colour-wise, Select Shutters can be manufactured in any of our **12 different standard colours**. For an added natural touch, you might as well pick from our **Stained Colour Palette of 10 Colours**, that copy the looks of natural wood species such as: **Walnut, Chestnut, Oak or others**. Select Shutters are covered by **5 years warranty**.





**full-height style**

The Full Height shutter panels span the entire height of the window. As a further customisation, panels may have **Split Louvre Sections** or **Midrails**.



**cafe style**

Cafe Style Shutters will only cover the lower section of a window. By default they follow the window layout but can be built as low or as high as needed. Cafe Shutters can come **with** or **without a top side frame**.



**tier on tier style**

This layout allows for two sets of panels on top of each other that opens independently. It provides the most control in managing airflow and light. Tier on Tier shutters may come **with** or **without a horizontal T-post**.



**solid panels**

The Solid Panel Shutters were created having tradition in mind. They are a lot more beneficial at keeping light at bay when needed. Solid Panels have no slats and **can be built in conjunction with any of the other styles**.



**tracked bi-folding**

The Tracked Bi-Folding style comes with panels mounted on 1 set of rails: top and bottom. The panels fold to either or both sides of the opening. This design is particularly suitable for patio doors or room divider.



**tracked bi-pass**

The Tracked Bi-pass configuration comes with the panels mounted on at least 2 different sets of parallel rails. In this case, the panels slide and overlay on top of each other. The panels get mounted onto the rails only and they are not hinged.



**french cut doors**

The French Cut Door Configuration is meant for single opening doors. The shutter will always be full height and will allow for either a square cut or a round cut around the door handle.



**special shapes**

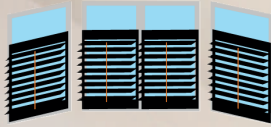
Besides rectangular shaped shutters we can offer solutions for various shaped windows or openings. Odd shaped windows may have shutters too, whether they are round, oval, rake shaped and triangular.



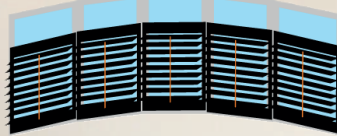
## shutters for various window shapes



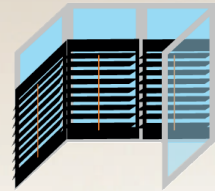
Rectangular



3 Section Bay Window



Bow Bay Window



Box Bay Window



Half Round Suburst



Elongated Eyebrow Sunburst



Eyebrow Sunburst



Quarter Round



Circle



Triangle



Hexagon



Octagon



Angled



Raked



Multi Panel Arch



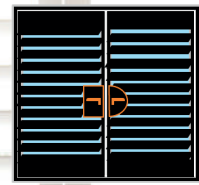
Sunburst at Top  
with Divider Strip



Sunburst at Top  
with T post



Sunburst Panel  
with Frame



French Door Cutout

## shutters with integrated blackout blinds

Plantation shutters can add elegance and beauty to your home, but will not complete block the light, as there will be light ingress! The new design **blackout plantation shutters** are a mix of a blind system and shutters that **can help to completely block out the light.**



## benefits of having plantation shutters

### **privacy**

Plantation Shutters are ideal for those who seek privacy without having to sacrifice the valuable sunlight. The louvres can be easily tilted according to the sunlight position or direction, in order to let it in entirely. When shut, shutters are a great way to keep out prying eyes, especially if you live on a busy street.

### **insulation**

Besides allowing for light control, Plantation Shutters can help in mitigating noise coming from the outside, as well as acting as another layer of insulation against the cold winter drafts or the summer's heat wave.

### **added value**

As opposed to using curtains or blinds, plantation shutters add up to the property's value itself, which make shutters an attraction when it comes to new developments or refurbishments. Kerb appeal, elegance, being a permanent fixture, reduced utility bills.



**our showroom, distribution, warehousing and training centre in London, UK**

Whilst working with us, you get **full transparency** in regards to our operations that support us in providing a **high quality product and overall service**. In our London location, we handle incoming deliveries, storage and dispatching, we also offer training sessions to our customers whilst all our products are showcased within the Showroom.



**meet the people behind the product – our Romanian Factory**

In our perspective, crafting a high quality product is all about working as a team, staying focused and persisting in what we do – all whilst having access to top of the line tools and machinery. Our factory in Romania, which is behind the **Mimeo Composite Product**, is fully equipped with **high end CNC machinery** and tools and employs only the most experienced **personnell** to run our in-house departments.







**our distribution, warehousing, showroom and training centre – in Chessington, Surrey, UK**

**Address:**

Unit 3, Kingston Business Centre, KT9 1DQ

**our regional distribution centre – in Manchester, UK**

**Address:**

Brindley Rd, Old Trafford,  
Stretford, Manchester M16 9HQ

**our EU distribution centre and office – in Standdaarbuiten, Netherlands**

**Address:**

Markt, 4759 BM  
Standdaarbuiten, The Netherlands

**our factory in Onesti, Romania**

**Address:**

str Avantului No. 23, Post Code 601124  
Onesti, Romania

**Phone:**

020 8908 9277

**Web:**

[www.shuttersfactory.biz](http://www.shuttersfactory.biz)

